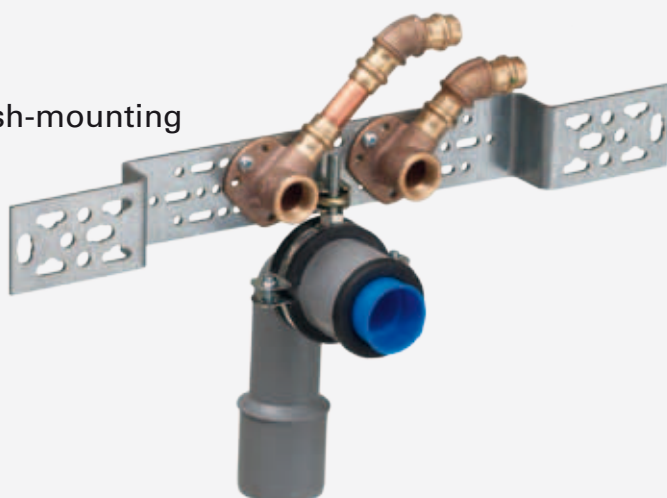


More Info

## Mount wall-elbows at all standard sanitary gauges!

- use for either pre-wall installation or flush-mounting
- suitable for all wall-elbows with 40 mm centres
- with holes to secure a waste pipe using the LEIFELD Cable-Clamp
- standard sanitary centres pre-stamped on both sides

Flush-mounting



Pre-wall installation



[www.youtube.com/  
HeinrichLeifeldGmbH](http://www.youtube.com/HeinrichLeifeldGmbH)



[www.facebook.com/  
Heinrich.Leifeld.GmbH](http://www.facebook.com/Heinrich.Leifeld.GmbH)

Secure wall-elbows and/or LEIFELD Sound-Shields using either M5 nuts & bolts or with the LEIFELD Backing Plate No. 1279 or No. 1280



**Nr. 1230**

straight



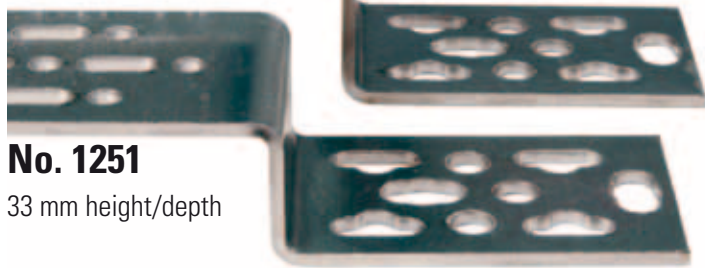
**No 1250**

50 mm high/depth



**No. 1251**

33 mm height/depth



**„How to.“ Film**

Fitting wall elbows to the LEIFELD Multi-Mount

Watch it now on



<http://produkt.leifeld.de/Film9-EN.htm>



Standard sanitary centres pre-stamped on both sides



Flush mounting installation utilising the LEIFELD Sound-Shield and Sound-Cap